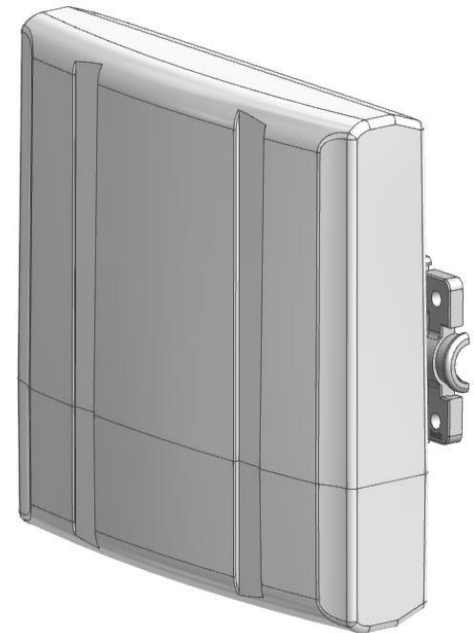


Multi-Band Patch Antenna

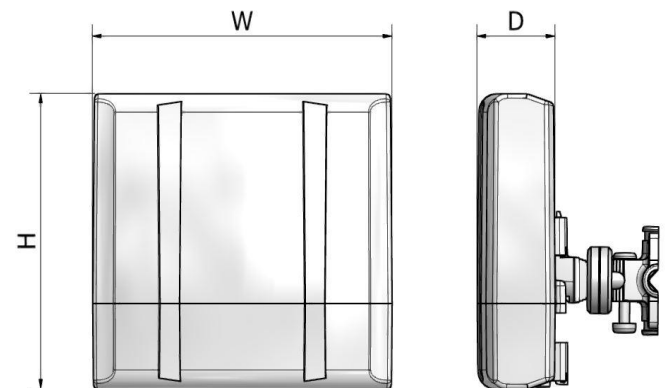
839~894, 1710~2120, 2520~2660, 3350~3900MHz / 5, 7, 7, 8dBi

Patch_8dBi_3.5Ghz

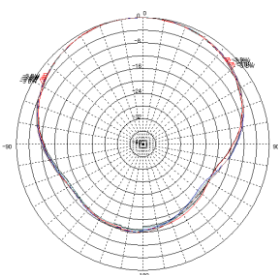
i. Electrical Specification					
Frequency Range (MHz)		839~894	1710~2120	2520~2660	3350~3900
Polarization		Vertical	Vertical	Vertical	Vertical
Band Width		55 MHz	410 MHz	140 MHz	550 MHz
Gain		≥ 5 dBi	≥ 7 dBi	≥ 7 dBi	≥ 8 dBi
Beam width	Horizontal	90° ± 20°	70° ± 30°	60° ± 30°	50° ± 30°
	Vertical	80° ± 20°	65° ± 25°	50° ± 30°	50° ± 30°
F-B ratio (Horizontal & Vertical)		≥ 8 dB	≥ 10 dB	≥ 10 dB	≥ 12 dB
VSWR		1 : 1.6	1 : 1.6	1 : 1.6	1 : 1.6
Impedance		50 Ω			
Maximum input power		10 W			



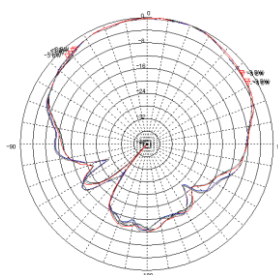
ii. Mechanical Specification	
Radom Dimension (HxWxD)	155 x 169 x 44 mm (LGU+규격: 220 x 220 x 60 mm)
Weight ((Exclude bracket)	≤ 0.8 Kg
Connector Type	SMA-Female x 1
Radome Material	ABS / ASA / Anti-UV-PVC
Radome Color	White / Ivory / Cool Gray 1C
Mechanical Tilt	Up ± 30°
	Down ± 90°
	Left, Right ± 30°
Temperature	-40 °C ~ 70 °C



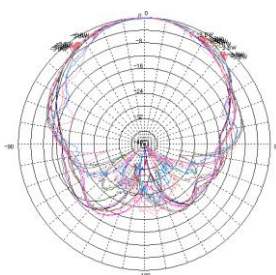
iii. Radiation Pattern



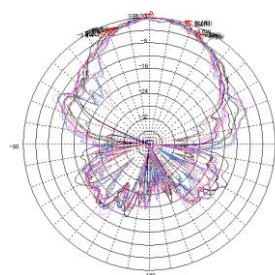
Horizontal Pattern
(839~894 MHz)



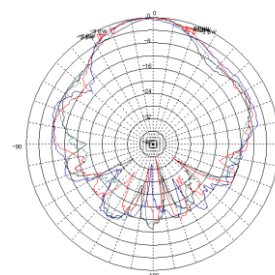
Vertical Pattern
(839~894 MHz)



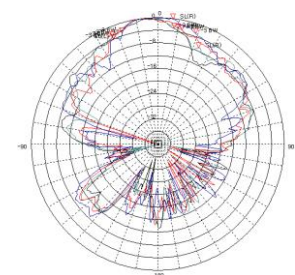
Horizontal Pattern
(1710~2660 MHz)



Vertical Pattern
(1710~2660 MHz)



Horizontal Pattern
(3400~3700 MHz)



Vertical Pattern
(3400~3700 MHz)